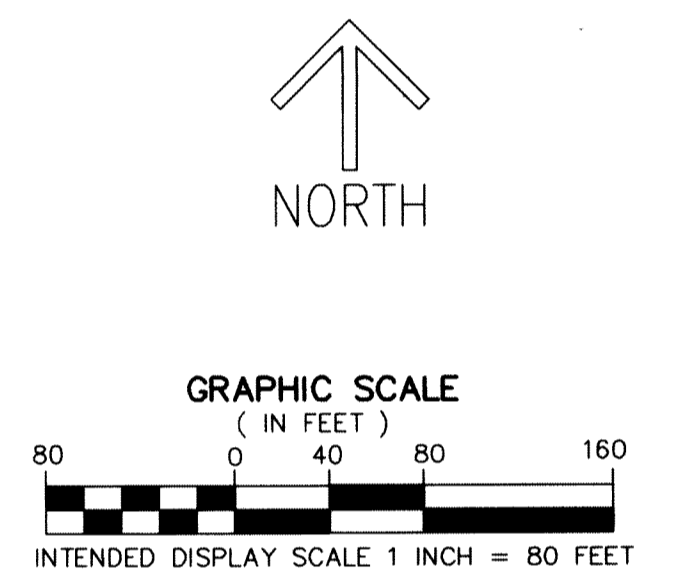
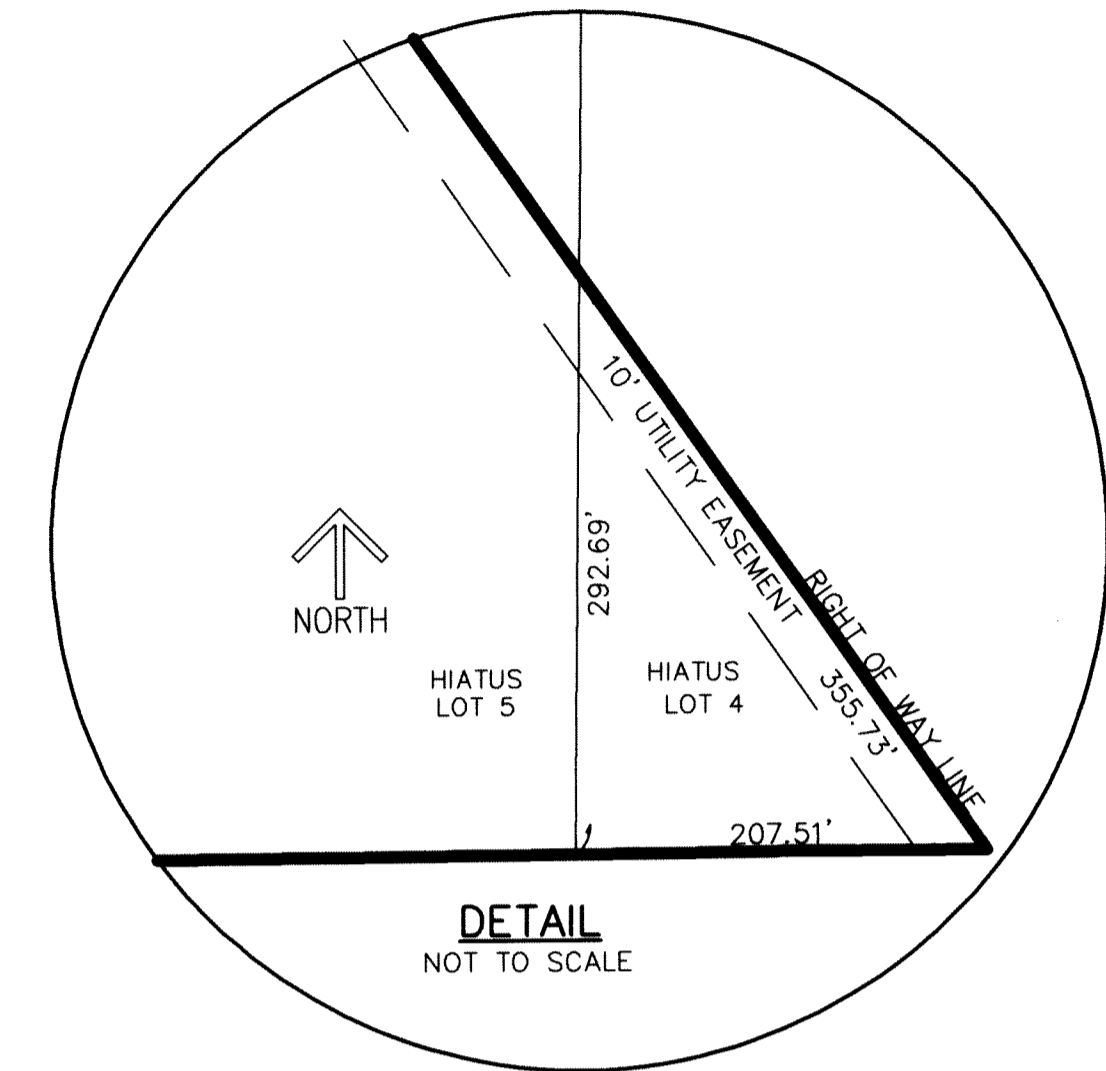
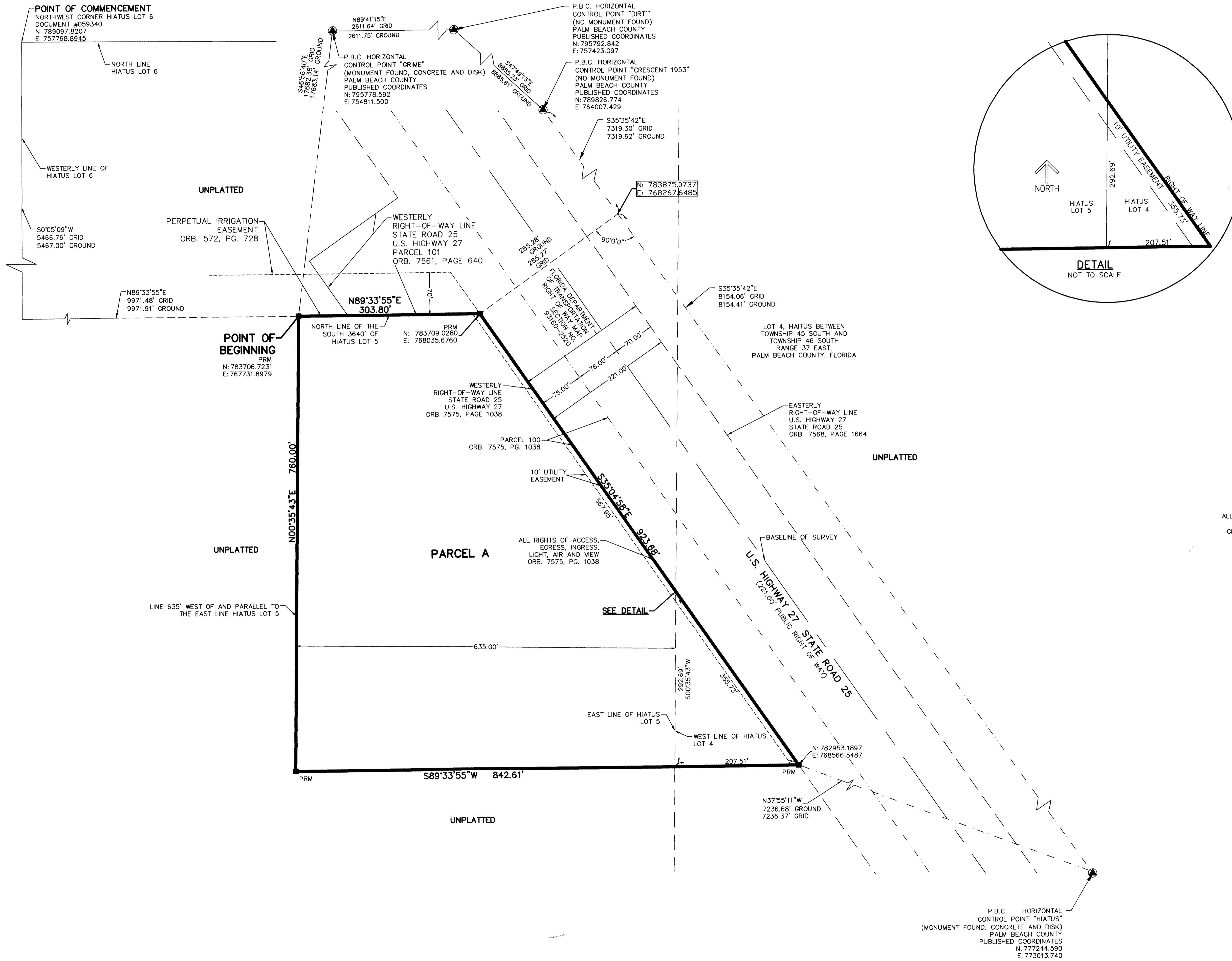


THIS INSTRUMENT PREPARED BY
DAVID P. LINDLEY
OF
CAULFIELD and WHEELER, INC.
SURVEYORS - ENGINEERS - PLANNERS
7900 GLADES ROAD, SUITE 100
BOCA RATON, FLORIDA 33434 - (561)392-1991

ROADRUNNER SUBSTATION

BEING A PORTION OF HIATUS LOTS 4 AND 5, LYING BETWEEN
TOWNSHIP 45 AND 46 SOUTH, RANGE 37 EAST, PALM BEACH COUNTY, FLORIDA



NOTES
COORDINATES, BEARINGS AND DISTANCES
COORDINATES SHOWN ARE GRID
DATUM = NAD 83 1990 ADJUSTMENT
ZONE = FLORIDA EAST
LINEAR UNIT = US SURVEY FEET
COORDINATE SYSTEM 1983 STATE PLANE
TRANSVERSE MERCATOR PROJECTION
ALL DISTANCES ARE GROUND UNLESS OTHERWISE NOTED
SCALE FACTOR = 0.999956831
GROUND DISTANCE X SCALE FACTOR = GRID DISTANCE
BEARINGS AS SHOWN HEREON ARE GRID DATUM,
NAD 83 1990 ADJUSTMENT, FLORIDA EAST ZONE.

LEGEND/ABBREVIATIONS
D.B. - DEED BOOK
FDOT - FLORIDA DEPARTMENT OF TRANSPORTATION
LB - LICENSED BUSINESS
N - NORTHING WHEN USED WITH COORDINATES
E - EASTING WHEN USED WITH COORDINATES
ORB OR O.R.B. - OFFICIAL RECORD BOOK
P.B. - PLAT BOOK
PG. - PAGE
R/W - RIGHT-OF-WAY
UE - UTILITY EASEMENT
■ PRM - INDICATES SET 4" X 4" X 24" CONCRETE PERMANENT REFERENCE MONUMENT WITH ALUMINUM DISK STAMPED "PRM C&W LB3591" UNLESS OTHERWISE NOTED
△ - DENOTES HORIZONTAL CONTROL POINT